

## Exhibit Team Members

**Experience Crew:** If you are a big kid at heart and still love to play – we need you! Your duties will include interacting with visitors and taking care of exhibits.

Volunteer Shifts:

10:00-1:00 or 1:00-3:00 or 3:00-5:00

## Free Floor Programming

Volunteers will set up and facilitate activities, interact with guests and clean-up/reset. Volunteers leading free floor programming should be out-going, friendly and eager to learn new things.

**Art Studio Shifts:** 9:00-12:00 or 12:00-3:00

**Innovation Station:** 9:30-11:30 or 12:30-2:30

## Education Programming

Through our education programming participants can dig deeper, experience more and gain new insights. Volunteers assist staff, lead stations and inspire young minds!

## Museum Hours

Tuesday, Wednesday & Saturday  
9:00-5:00

Thursday & Friday 9:00-8:00

Sunday 1:00-5:00

Closed on Monday

## Volunteer Orientations

All volunteers must attend orientation/tour and if over 18 complete a background check.

Please contact the Volunteer Coordinator  
[cdmvolunteers@normal.org](mailto:cdmvolunteers@normal.org)

(309) 433-3453 to register for an orientation

Thur. September 29 3:30 PM

Fri. September 30 10:00 AM

Thurs. October 6 3:30 PM

Thurs. October 16 3:30 PM

Fri. October 17 10:00 AM

## Volunteer Expectations

Once you have completed a volunteer orientation and simple background check you are ready to represent the museum and assist with programs and activities.

Volunteers are responsible for scheduling their own hours through the volunteer coordinator.

A limited number of volunteers are needed for some events. Sign-up is on a first come, first served basis.

Volunteers are expected to work their entire shift, and follow museum dress code and conduct guidelines at all times.

For more information contact  
Visitor Services and Volunteer Coordinator,  
Shelly Hanover (309) 433-3453  
[cdmvolunteers@normal.org](mailto:cdmvolunteers@normal.org)

# Fall 2011

## Volunteer & Service Learning Opportunities

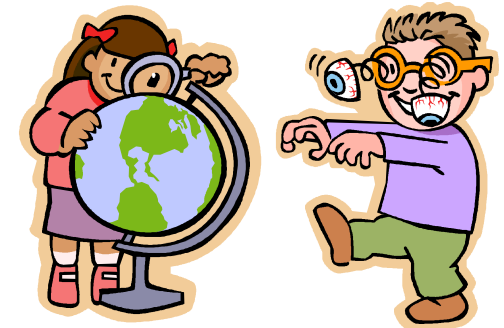


101 E. Beaufort St,  
Normal, IL 61761

[www.childrensdiscoverymuseum.net](http://www.childrensdiscoverymuseum.net)

(309) 433-3453

[shanover@normal.org](mailto:shanover@normal.org)



" You can dream, create, design and build the most wonderful place in the world. but it requires people to make the dream a reality."

Walt Disney

# Education and Programming Needs

## Discovery Day Camps

Volunteers assist as Camp Counselors with hands-on activities, museum exploration, science experiments and more!

Mon. October 10—Dinosaurs

Fri. October 21—Chemistry

Volunteer Shifts: 10:00-1:00 or 1:00-5:00

## Early Explorers

Preschoolers are dropped off at the museum for their very own programming. Volunteers assist with story time, arts & crafts, themed activities and supervising participants.

Select Saturdays: 9:30—12:00

October 22 Pumpkins

November 12 Superheroes

December 10 Holiday Workshop

## Zoot Dance Parties

Kindergarten -6<sup>th</sup> grade, learn lines, sing songs and put on a performance! We are looking for high-energy volunteers that are ready to have fun and encourage little stars along.

Volunteer shifts:

Friday Nights—5:30-8:30 PM

Oct 14 Halloween Bash

Nov. 11 Girl Divas

Dec. 9 White Christmas

## After School Programs

Volunteers lead themed activity stations at various after school programs. Meet at the museum and ride with the staff to the schools.

Please arrive 5 minutes early for your shift.

You will return to the museum around 5:15.

Th. Sept. 15—Cedar Ridge 3:00

Tu. Sept. 20—Irving 3:00

Th. Sept. 22—Olympia North 2:45

Th. Sept. 29—Towanda 2:45

Th. Oct. 6—Trinity Lutheran 3:00

Tu. Oct. 11—Sheridan 3:00

Th. Oct. 13—Olympia 2:40

Th. Oct. 20—Heyworth 2:45

Th. Oct. 27—Bent 3:00

Tu. Nov. 1—Carlock 2:45

Th. Nov. 3—Holy Trinity 3:00

Tu. Nov. 8—Oakland 3:00

Th. Nov. 10—Washington 3:00

Tu. Nov. 15—Stevenson 3:00

Th. Nov. 17—YWCA 3:00

## 6th Grade Science Workshops

Volunteers assist staff in leading science programs at area Junior Highs.

Select Mornings 8:00-12:00

## Family Fun Nights

Volunteers assist with themed programming!

Help families make magical memories!

### Boo Bash

Saturday, October 22 • 5:30-8:30

Monday, October 24 • 4:30-7:30

### Santa PJ Party

Saturday, December 3 • 5:30-8:30

### Happy Noon Year's

Saturday, December 31

8:30-12:00 or 12:00-3:30

## Special Events

These energetic volunteers assist with special programs and events, leading activities, and having a great time!

### World Wide Day of Play

Saturday, September 24

Volunteer Shifts:

8:00-11:00 or 11:00-2:00 or 2:00-5:00

Volunteers will assist with various activity booths of PLAY in Uptown Normal.

### Redbird Primetime in Uptown

Saturday, October 15

Volunteer Shifts: 5:30-8:30

An evening of fun ... designed for ISU's Homecoming... the museum will be open late with fun activities and a live band!